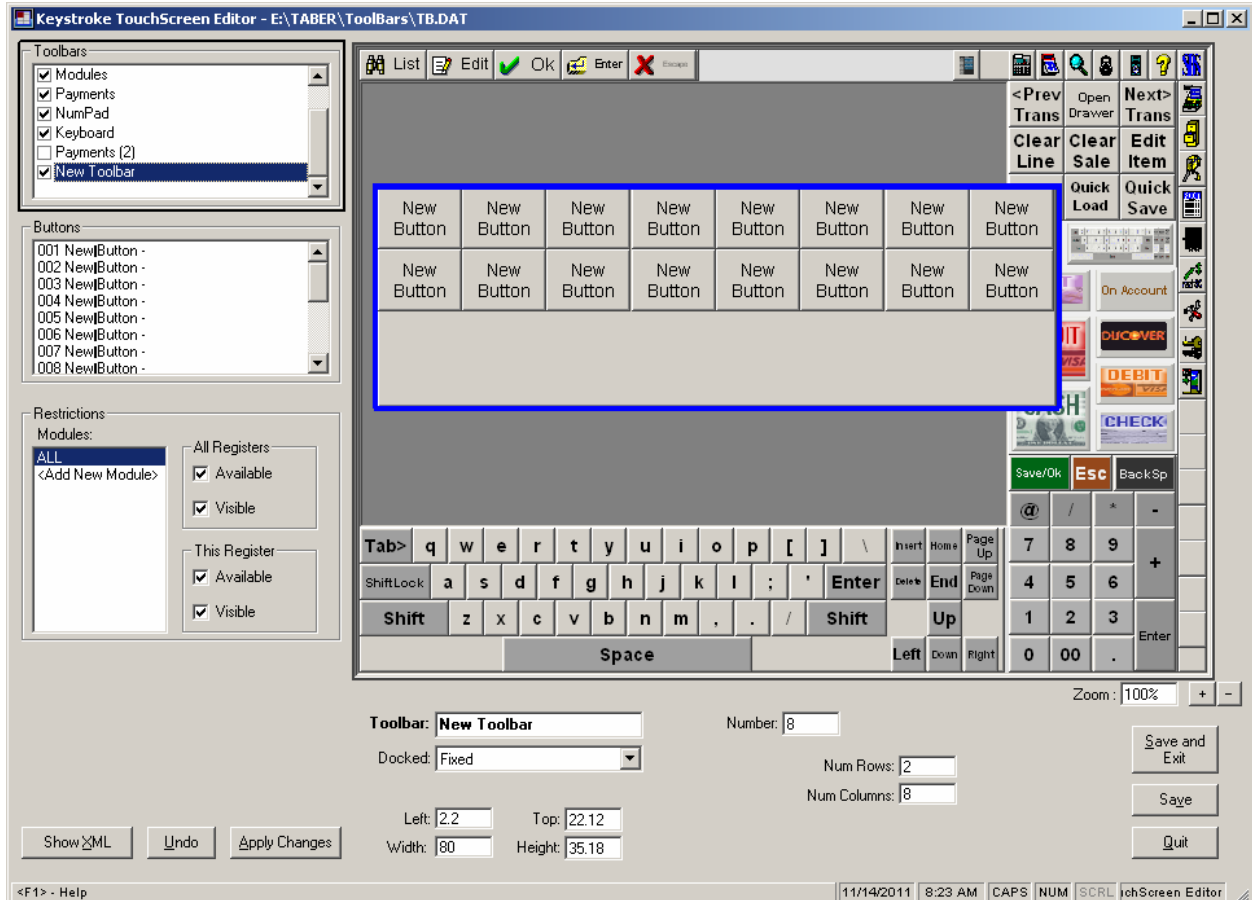


Keystroke POS TouchScreen Editor

Keystroke POS utilizes a variety of on screen buttons grouped in boxes called toolbars that can be used to quickly issue very simple to very complex commands with a single mouse click or the touch of a finger. Each button within a toolbar (and the toolbar itself) is configurable in its look, size and the actions it performs.



The Keystroke Advanced POS TouchScreen Editor is a powerful WYSIWYG (What-You-See-Is-What-You-Get) program available directly from inside the Keystroke Advanced POS program. It can be used to add, remove, and change the toolbars as well as the buttons inside of them. Everything from when the toolbars will appear, their size, their location, and the number of buttons within each can easily be changed on screen using a mouse, the keyboard, or a combination of both.

The TouchScreen editor is part of the Keystroke Advanced POS system. While systems that have the standard Keystroke POS license use the same toolbar files and technology, the on screen TouchScreen Editor is only available with the Advanced license. Upgrading to Keystroke Advanced POS is very simple. Please contact your dealer of SBS for more information.

STARTING THE TOUCHSCREEN EDITOR

The TouchScreen editor can only be started from within the Keystroke Advanced program. It can be launched by either Right Clicking on any of the existing toolbar or buttons, by selecting the TouchScreen Editor function in the Configuration Manager's Settings menu, or by programming a macro for "PopUp=TouchScreenEditor".

When the editor first appears, it shows a copy of the toolbars currently in used by Keystroke in its main editing window. The name of the toolbar file that is being used is displayed in the title bar of the Editor's window. The left and bottom sides of the editor show information about the toolbar file and the currently selected toolbar or button.

The mouse can be used to select individual toolbars or buttons by clicking on them. Once selected, they can then be resized by dragging the highlighted borders. They can also be moved by clicking on them again (use <Ctrl>+Click to highlight a toolbar for movement). The toolbars and buttons can also be selected, moved, and altered by changing the parameters displayed on the left and bottom sides of the editor.

EXITING THE TOUCHSCREEN EDITOR

Save Button

Save and Exit Button

Quit Button

Help Button

Import Button

EDITING TOOLBARS

EDITING BUTTONS

XML DATA

Toolbar Files

XML Primer

Keystroke POS software is developed and owned by Specialized Business Solutions ("SBS") of Long Beach, CA and are protected by United States and international copyright laws (Copyright (c) 1987-2011. All rights reserved).

For more information about Keystroke POS or other products published by Specialized Business Solutions, call 800.359.3458 or 970.262.1720 or visit www.KeystrokePOS.com.

Rev. 11/2011

****TOUCHSCREEN EDITOR (Advanced Only)****

STARTUP SWITCHES - Added the Command Line and WS#.INI switch "TSEditorMode=". The supported value is 0 (default) or 1. Setting to 1 will cause the Touch Screen Editor to run as a part of Keystroke instead of being launched as its own program from Keystroke. The difference is with TSEditorMode=1, Keystroke will not be able to be used while the editor is open, the editor will not appear as a separate program on the task manager list, and it will not be able to be minimized.

TSEditor - Before saving the toolbar file, the TouchScreen Editor will first copy the original to a backup file (with the extension .B## where ## is the next available number). If there is a file that was backed up within the last 5 minutes, then another backup is not made. Also, if there are more than 99 backup files, then the oldest backup will be replaced.

TSEditor - Changing the values in the Toolbar Width and Height fields will no longer stretch the buttons to match the new value. Turning on the "Stretch Buttons" checkbox will cause the buttons to change size with the toolbar when the Width and Height fields are edited, Note that the "Stretch Buttons" checkbox is only visible while in the Toolbar Width and Height fields.

TSEditor - Buttons - Macro - Added the ability to bring up the list of available macro functions by pressing <Ins> or <F2> or clicking on the Macro Search button (binoculars icon).

****TOUCHSCREEN EDITOR (Advanced Only)****

TOOLBAR - Drag Borders - When the size of the toolbar is changed by dragging one of its borders with the mouse, the buttons will not move. This will create a blank area if the toolbar is made larger or may cover up some of the existing buttons if it is made smaller.

TOOLBAR - Drag Borders - To resize a toolbar and the buttons inside of it, hold down the <Ctrl> key while using the mouse to drag one of its borders. When the mouse button is released while the Ctrl key is pressed, the size and location of the buttons inside the toolbar will be adjusted to match the new toolbar size.

TOOLBAR - NumRows, NumColumns - when these settings are changed (best way is to use the Up/Down button when in the field) the "Top" or "Left" setting for each button will be adjusted in the toolbar so that a blank area appears either at the bottom or right of the toolbar.

****TOUCHSCREEN EDITOR (Advanced Only)****

When the TouchScreen Editor is loaded, its Window will appear as a separate program from Keystroke but the two will be linked together so that when the Save button is used it will also update the toolbars in the open Keystroke window. However, if Keystroke is closed, the Touchscreen editor will remain open. Keystroke can be restarted but it will not be linked to the currently displayed TouchScreen Editor.

Moving Buttons - If the mouse is used to move a button and it is moved more than 75% of its size, then the program will automatically change the Index of the button to be the highest one in the toolbar. This will cause it to be above all the other buttons in the display order and will keep it from disappearing behind other buttons when the Move highlight box is released.

****TOUCHSCREEN EDITOR (Advanced Only)****

IMPORT TOOLBAR

Clicking the "Import Toolbar..." button (or selecting "Import Toolbar..." from the pop up menu) will start the Import Toolbar function. It will first bring up a file browser where the toolbar file to import from must be selected. The browser will always start up in the FILES\TOOLBARS\ folder below the Program Directory and will display all the files that have a .DAT extension. You can browse to a different folder (e.g. DATA\TOOLBARS) but be aware that the files displayed in the window may not all be toolbar files since the .DAT extension is used for other types of data files.

Once the file is selected the toolbars from it will be displayed in a stripped down version of the TouchScreen Editor. From here you can click on a toolbar to highlight it and then click on the "Mark for Import" button to add it to the "Toolbars to be Imported" list. Each toolbar can be added to the list only once. Clicking on the list and pressing will remove an already selected toolbar. Once the list contains all the toolbars to be imported, click the "Import and Exit" button to copy the selected toolbars back to the TouchScreen editor. If you only want to import a single toolbar at a time, you can click on the one toolbar and then the "Import and Exit" button (the "Mark for Import" button can be skipped). The "Cancel" button will close the Toolbar Importer without importing any toolbars.

****TOOLBAR EDITOR (Advanced Only)****

Right Clicking on a Toolbar Button (or a toolbar area) will pop-up a menu where "Edit Button" or "Edit Toolbar" can be selected. Selecting "Edit Button" will bring up the Button Editor that was available in previous versions. Selecting "Edit Toolbar" will bring up the new toolbar editor. The pop-up menu can be bypassed by holding down the <Ctrl> key when clicking with the right mouse button to immediately bring up the Toolbar Editor. Holding down the <Shift> key will bring up the Button Editor. (If not licensed for Advanced then the Button Editor will always come up.)

Macros - Added the macro function POPUP=EditToolbars to bring up the Toolbar Editor (Advanced Only). In the Toolbar Editor, the currently selected Toolbar will be highlighted with a Blue border and its name will be highlighted in the list of toolbars. The currently selected toolbar can be moved by dragging the left and top border lines. It can be resized by dragging the bottom and right border lines. When a button in the current toolbar is selected, a thin red border will be displayed around it. If the same button is selected with the mouse, then it will switch to drag mode where the whole button will turn red. In this mode, the mouse can be used to move and resize the button.

The toolbar window can be zoomed in and out by using <Ctrl+Plus> and <Ctrl+Minus> keys or by entering the zoom factor in the Zoom field or by pressing the "+" and "-" buttons. The window can be panned by using the <Ctrl+Left/Right/Up/Down> keys (use <Shift+Ctrl+Left/Right/Up/Down> keys for larger jumps. It can also be moved by dragging with the mouse or by clicking on the scroll bars (note that scroll bars are hidden unless zoomed in or window has been moved).